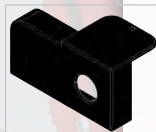
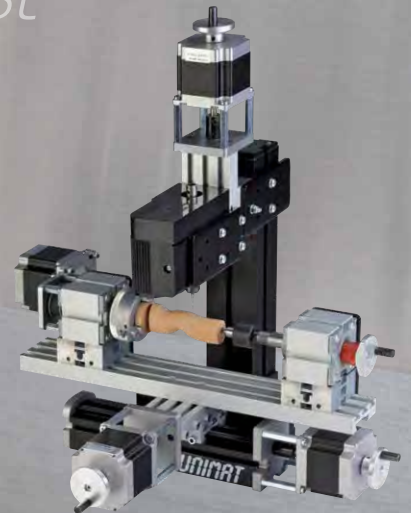


Ersatzteil Preisliste Spare Part Price List



art.no.: A1A 000 010

[U0] € 4,-
Riemen Abdeckung
Drive belt cover



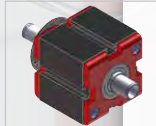
art.no.: A1A 020 000

[U1] € 35,-
Maschinenbett, lang
Machine bed, long



art.no.: A1A 020 000 SW

[U1ML] € 35,-
Maschinenbett, lang schwarz
Machine bed, long black cover



art.no.: A1A 030 000

[U2] € 40,-
Motorvorgelege, lose
Countershaft



art.no.: A1M 030 040

[U4] € 6,-
Riemenscheibe, Metall
Belt pulley, metal



art.no.: A1A 060 000

[U3/U5] € 20,-
Schlitten, klein
Slide, small



art.no.: A1A 050 040 MTG

€ 4,-
Handrad komplett für U3/U5
Hand wheel for U3/U5



art.no.: 162 420 MH-R

[U4] € 39,-
High Speed Motor, rot
High speed motor, red



art.no.: 162 420 MH-S

[U4ML] € 39,-
High Speed Motor, schwarz
High speed motor, black



art.no.: ICC 127 42

€ 18,-
Motor komplett ohne Gehäuse
Motor complete without housing



art.no.: A1Z 420 500

€ 19,-
Antriebseinheit ML ohne Gehäuse
Drive unit ML without housing



art.no.: A1Z 320 500

€ 20,-
Powermotor ohne Gehäuse
Power motor without housing



art.no.: A1A 040 000

[U6] € 23,-
Reitstock
Tailstock



art.no.: 162 450 MH

€ 15,-
Rollkörner
Live centre



art.no.: A1A 010 000

[U7] € 26,-
Maschinenbett, kurz
Machine bed, short



art.no.: A1A 010 000 SW

[U7ML] € 26,-
Maschinenbett, kurz schwarz
Machine bed, short black cover



art.no.: A1A 090 000

[U8] € 10,-
Schraubstock
Machine vice



art.no.: A1A 050 000

[U9] € 30,-
Schlitten, groß
Slide, big



art.no.: A1A 050 030

€ 5,-
Spindel für U9
Spindle for U9



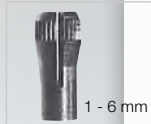
art.no.: A1A 050 Mod

€ 6,-
Handradmodul für U9
Hand wheel module for U9



art.no.: A1A 000 100

[U10] € 3,50
Zwischenstück
Intermediate piece



art.no.: A1A 000 150
[U12] € 4,70
8 Spannzangen, sortiert
8 collets, assorted



art.no.: 162 460 ***
[U12MLxx] € 5,50
Messingspannzangen, ** mm
Brass collet, ** mm



art.no.: A1A 000 110
[U14] € 3,-
Bohrhebel
Lever for drilling



art.no.: ZWZ 980 030
[U15A] € 5,-
Schraubendreher, Phillips #2
Screwdriver, Phillips #2



art.no.: ZWZ 980 075
[U15B] € 6,-
Schraubendreher, Inbus 2,5mm
Screwdriver, allen key 2,5mm



art.no.: ZWZ 980 000
[U15c] € 1,50
Schraubendreher, Phillips #0
Screwdriver, Phillips #0



Unimat 1 alt / old
bis / until Nov. 2021
+
Playmat

art.no.: A0A 000 120 MTG
[Ua+Ub] € 1,80
Sägeblatthalter mit Schraube M2x8
Saw blade holder incl. screw M2x8



Unimat 1 alt / old
bis / until
Nov. 2021

art.no.: A0A 000 300 MTG
[U17n] € 5,-
Stichsäge Tisch
Jig-saw table



art.no.: A1A 100 080
€ 22,-
Stichsägegehäuse, neu
Jig-saw casing, new



art.no.: A2A 000 101
€ 5,-
Stichsäge Tisch, neu
Jig-saw table, new



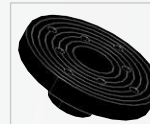
art.no.: A1Z 121 000
[U23] € 1,30
Exzenter
Eccentric



art.no.: A1Z 121 000 MTG
€ 10,-
Exzenter montiert
Eccentric mounted



art.no.: A1Z 121 010
[U23b] € 0,80
Distanzhülse für Exzenter
Distance washer for eccentric



art.no.: A1Z 100 010
[U25] € 2,20
Aufspannscheibe Kunststoff
Clamping plate



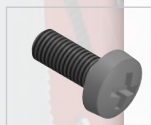
art.no.: A1Z 100 020
[U27] € 1,50
Drechselaufgabe
Woodturning support



art.no.: A1Z 100 040
[U29] € 0,70
Zentrumsfinder
Centre finder



art.no.: ZSR G32 995
[U30] € 0,10
Schraube 2,9x9,5
Screw 2,9x9,5



art.no.: ZSR M40 410
[U31] € 0,10
Schraube M4x10
Screw M4x10



art.no.: A1A 101 000
[U32] € 1,50
Mitnehmerspitze
Drive centre



art.no.: A1A 101 000 MTG
€ 10,-
Mitnehmerspitze montiert
Drive centre mounted



art.no.: ZSR M40 450
[U33] € 0,10
Schraube M4x50
Screw M4x50



art.no.: ZSR M40 425
[U35] € 0,10
Schraube M4x25
Screw M4x25



art.no.: ZSR M40 416
[U36] € 0,10
Schraube M4x16
Screw M4x16



art.no.: ZSR M40 408
[U37] € 0,10
Schraube M4x8
Screw M4x8



art.no.: ZSR M40 406
[U38] € 0,10
Schraube M4x6
Screw M4x6



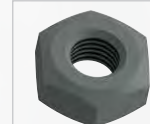
art.no.: A1A 000 170
[U40] € 0,60
Unterlagplättchen 0,1 mm
Small part 0,1 mm



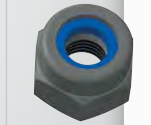
art.no.: A1A 000 190
[U41] € 1,-
Unterlagplättchen 0,4 mm
Small part 0,4 mm



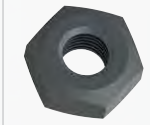
art.no.: A1A 000 180
[U42] € 1,50
Unterlagplättchen 1,0 mm
Small part 1,0 mm



art.no.: ZMU 340 400
[U43] € 0,10
Sechskantmutter M4
Nut M4



art.no.: ZMU 340 120
[U43s] € 0,10
Sicherungsmutter M4
Lock nut M4



art.no.: ZMU 340 302
[U44] € 0,1
Mutter M3 f. Verbindungselement
Nut M3 for connection piece



art.no.: A1A 000 160
[U45] € 0,80
Zwischenblech
Intermediate plate



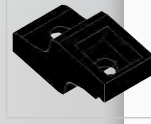
art.no.: A1A 060 040
[U46] € 1,-
Nutenstein
Slot nut



art.no.: A1A 010 020
[U47] € 1,50
Klemmplatte
Clamping plate



art.no.: A1A 000 073
[U48ML] € 8,00
Spannzangenhalter
Collet holder



art.no.: A1A 000 090
[U49] € 1,-
Spannklau
Clamping jaw



art.no.: ZSR M40 470
[U50] € 0,50
Schraube M4x70
Screw M4x70



art.no.: ZWZ 110 200
[U51] € 1,-
Inbusschlüssel 2 mm
Allen key 2 mm



art.no.: ZST 110 345
 [U52] € **0,60**
 Zylinder Stift
 Cylindric rod



art.no.: A1A 000 080
 [U53] € **5,-**
 Außen Drehstahl
 Tool for outside turning



art.no.: A1A 000 130
 [U54] € **1,50**
 Körnerspitze ø5 mm
 Centre ø5 mm



art.no.: ZWZ 700 020
 [U55] € **1,30**
 Bohrer 2 mm
 Drill 2 mm



art.no.: ZWZ 560 0xx
 [U56] € **9,50**
 Fräser
 Milling head



art.no.: ZRM 730 082
 € **2,50**
 Antriebsriemen 82 - Motor ML
 Drive belt 82 - Drive Unit ML



art.no.: ZRM 733 087
 [U57] € **2,50**
 Antriebsriemen 87
 Drive belt 87



art.no.: ZRM 733 092
 [U58] € **2,70**
 Antriebsriemen 92
 Drive belt 92



art.no.: A1Z 320 090
 € **3,-**
 Powermotor Riemen
 Drive belt for Power Drive Unit



art.no.: A1Z 340 090
 € **3,-**
 Powermotor Riemen
 Drive belt for Power Drive Unit



art.no.: ZMU 620 400
 [U62] € **0,10**
 4-Kant Mutter M4
 Nut M4



art.no.: A1A 000 082
 [U63] € **6,-**
 Drehstahlunterstützung
 Metal turning support



art.no.: ZSR M34 0IS KT
 [U64] € **0,30**
 Inbusschraube f. Verbindungselem.
 Allen key screw for conn. piece



art.no.: ZWZ 110 250
 [U65] € **1,-**
 Inbusschlüssel 2,5 mm
 Allen key 2,5 mm



art.no.: A1A 000 ZinSk
 [U66] € **4,-**
 Verbindungselement
 Connection piece



art.no.: A1Z 470 010
 [U67] € **12,-**
 Fixierplatte 50x125 mm
 Stabilizing plate 50x125 mm



art.no.: ZSR M40 ISKT
 [U70] € **0,10**
 Schraube M4x40 für ML
 Screw M4x40 for ML



art.no.: ZWZ 400 700
 [U71/72] € **1,90**
 Gabelschlüssel 7/14 mm
 Fork wrench 7/14 mm



art.no.: ZSB 250 430
 [U74] € **0,10**
 Beilagscheibe 4,3
 Washer 4.3



art.no.: ZWZ 110 300
 [U75] € **1,-**
 Inbusschlüssel 3 mm
 Allen key 3 mm



art.no.: ZWZ 110 400
 € **1,-**
 Inbusschlüssel 4 mm
 Allen key 4 mm



art.no.: A1Z 470 000
 [U79] € **15,-**
 Fixierplatte 50x90 mm
 Stabilizing plate 50x90 mm



art.no.: A1Z 480 000
 [U80] € **10,-**
 Befestigungswinkel 50x45 mm
 Stabilizing angle 50x45 mm



art.no.: A1A 000 140
 € **0,70**
 Aufkleber
 Sticker



art.no.: A1M 050 000 MTG
 € **20,-**
 Längsschlittenführung ML
 Longitudinal slide guide ML



art.no.: A1M 050 025
 € **1,-**
 Klemmkeil Längsschlitten
 Gib longitudinal slide



art.no.: A1M 050 044
 € **5,-**
 Handradgriff starr ML/CNC
 Handwheel handle fixed ML/CNC



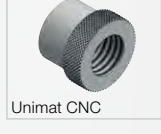
art.no.: A1M 050 047
 € **10,-**
 Handradgriff drehbar ML
 Handwheel handle moveable ML



art.no.: A1M 050 000 CNC
 € **30,-**
 Längsschlittenführung CNC
 Longitudinal slide guide CNC



art.no.: A1M 050 025 S
 € **9,-**
 Klemmkeil Stahl für 164480CNC
 Gib steel for 164480CNC



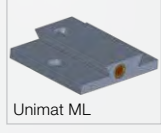
art.no.: A1M 050 024 CNC
 € **8,-**
 Justiermutter für 164480CNC
 Backlash nut for 164480CNC



art.no.: A1M 050 026 CNC
 € **5,-**
 Fixierung für A1M 050 024 CNC
 Fixation for A1M 050 024 CNC



art.no.: A1M 050 028 CNC
 € **10,-**
 Aufnahme für A1M050024/026CNC
 Guide for A1M050024/26CNC



art.no.: A1M 060 020 MTG
 € **12,-**
 Querschlittenführung ML
 Cross slide guide ML



art.no.: A1M 060 025
 € **1,-**
 Klemmkeil Querschlitten
 Gib cross slide



artno.: A1M060020CNCHELO
 € **15,-**
 Querschlittenführung CNC
 Cross slide guide CNC



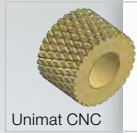
art.no.: A1M 060 024 CNC
 € **5,-**
 Justiermutter Querschlitten CNC
 Backlash nut cross slide CNC



art.no.: A1M 060 025 CNCS
 € **10,-**
 Klemmkeil Stahl für 164060CNC
 Gib steel for cross slide CNC



art.no.: A1M 060 025 CNCS2
 € **10,-**
 Klemmkeil Stahl für 164068CNC
 Gib steel for cross slide 80 mm



art.no.: A1M 060 026 CNC
 € 5,-
 Fixierung für A1M 060 024 CNC
 Fixation for A1M 060 024 CNC



art.no.: A1M 060 036 CNC
 € 10,-
 CNC Kupplung Wellen $\varnothing_{1+2} 5$ mm
 CNC coupling shaft $\varnothing_{1+2} 5$ mm



art.no.: ZSR 2508 ISK
 € 0,50
 Schraube M2,5x8 für A1M060036CNC
 Screw M2,5x8 for A1M060036CNC



art.no.: CNC-E-stop
 € 6,-
 Notaus Taster
 E-Stop button



art.no.: ZSR M308 ISKT
 € 0,50
 Schraube M3x8
 Screw M3x8



art.no.: ZSR M310 ISKT
 € 0,50
 Schraube M3x10
 Screw M3x10



art.no.: ZST 130 40628
 € 0,10
 Gewindestift M4x6
 Thread pin M4x6



art.no.: A1M 080 090
 € 5,-
 Sinterlager Set für ML Stichsäge
 Bearing set for ML jig saw



art.no.: A1M 080 062 MTG
 € 10,-
 Exzenter ML 5 mm
 Eccentric ML 5 mm



art.no.: A1M 080 060 MTG
 € 10,-
 Exzenter ML 8 mm
 Eccentric ML 8 mm



art.no.: A1M 080 020
 € 7,50
 Aufnahme groß
 Clamp big



art.no.: A1M 080 022
 € 7,50
 Aufnahme klein
 Clamp small



art.no.: A1M 080 023
 € 7,50
 Aufnahme medium
 Clamp medium



art.no.: ZST 130 406
 € 0,10
 Gewindestift M4x6
 Thread pin M4x6



art.no.: ZST 130 408
 € 0,10
 Gewindestift M4x8
 Thread pin M4x8



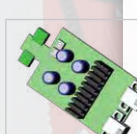
art.no.: ZST 130 412
 € 0,10
 Gewindestift M4x12
 Thread pin M4x12



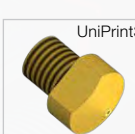
art.no.: 161 31X
 € 35,-
 Netzteil 14V/100-240V
 Adapter 14V/100-240V



art.no.: 161 610
 € 49,-
 Netzteil 24V/5A/100-240V
 Adapter 24V/5A/100-240V



art.no.: MCB CONT AX
 € 49,-
 TCTControl Ax Platine
 TCTControl AX circuit board



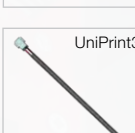
art.no.: P3D 303 044
 € 19,-
 Düse $\varnothing 0,4$ mm
 Nozzle $\varnothing 0,4$ mm



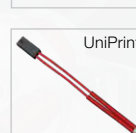
art.no.: P3D 303 000G
 € 98,-
 Hotend komplett
 Hotend complete



art.no.: P3D 303 035
 € 10,-
 Silikon Isolierung - Hotend
 Silicone insulation - hotend



art.no.: P3D 303 025
 € 7,50
 Temperatursensor - Hotend
 Thermistor - hotend



art.no.: P3D 303 030
 € 10,-
 Heizpatrone - Hotend
 Heating cartridge - hotend

Preise in Euro, ab Werk Mödling/AT. Gültig bis zum Erscheinen einer neuen Preisliste.
Prices in Euro, ex works Mödling/Austria. Valid until release of a new pricelist

5 30
 JAHRE GARANTIE
 YEARS WARRANTY
 JAHRE UNIMAT
 YEARS UNIMAT

The Cool Tool
 est. 1982
 Austria